

THE PROJECT

Covenant College was established in 1955 as an independent, residential, liberal arts college with strong ties to the Presbyterian Church. The present undergraduate enrollment is just under 1,000 students and is projected to increase to 1,300. DOBER LIDSKY MATHEY (DLM) was retained to help the College articulate space needs and develop a Master Plan with the facilities that will be required over the next twenty years.

CHALLENGE

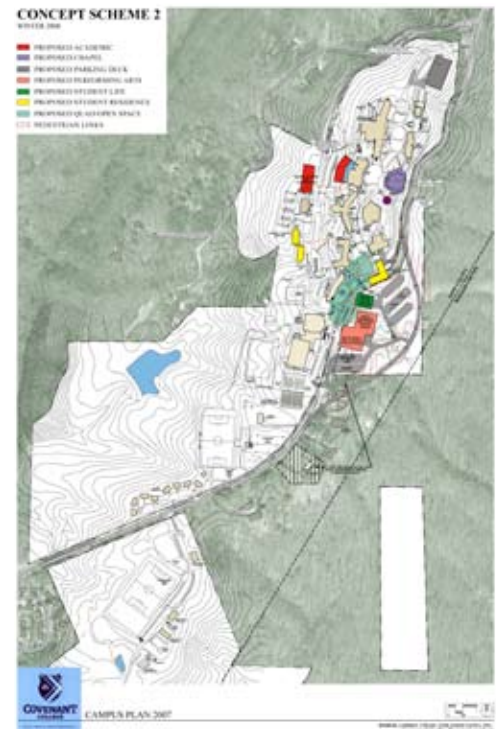
The 300-acre campus is situated on a mountain ridge, where there is a change of grade of almost 400' from the base to the campus plateau at the top. Although offering a splendid view, there is little open space for building sites, playfields, and the traditional campus quadrangle. A major state highway cuts through the College's property, which isolates a large parcel at the center of campus, further constraining development.

Facility needs include a fine and performing arts center with music recital hall, a campus center, a new or expanded chapel, and additional academic space and student housing. Existing playfields and courts are at a premium, so must be retained, although the number of tennis courts will be increased. A parking deck will also be required as surface parking lots will be lost to building sites.

SOLUTION

Two Campus Plan options were developed. The significant difference is that in one option the state highway is relocated to provide more space at the center of campus. The College is in the process of working with the state and abutting property owners to determine the feasibility of this option.

*Project completed under previous name: Dober, Lidsky, Craig and Associates, Inc.



CONCEPT DRAWINGS

REFERENCE

Dr. Niel Nielson
President
706 419 1117
nielson@covenant.edu

PRINCIPAL IN-CHARGE

Arthur J. Lidsky, AICP
Study Director

