

**THE PROJECT**

DOBER LIDSKY MATHEY (DLM) led a study of three colleges within Cornell University: the College of Agriculture and Life Sciences, The College of Arts and Sciences (physical sciences), and the College of Engineering. The purpose of this study was to analyze the amount, type, and utilization of space.

The study consisted of two components:

1) a Macro Study comparing existing space to a space allocation model designed specifically for each department, center, and institute; and 2) a Micro Study of department spaces by space type. The study encompassed approximately 2.3 million net square feet, 15 administrative units, 33 academic departments, and 8 labs, centers, and institutes. Peer comparisons were an early component of the study.

**CHALLENGE**

One challenge was the facility inventory. It was designed for cost recovery and not for space management or utilization studies. Another challenge was the lack of a set of sophisticated utilization tools and guidelines that the University's administration could trust.

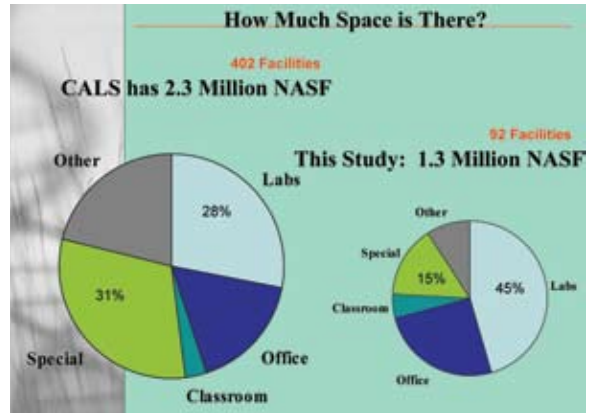
**SOLUTION**

DOBER LIDSKY MATHEY's (DLM) staff surveyed all the space and modified the inventory so that it could be used for facility utilization studies. In addition, the firm created department specific space allocation models using space guidelines. The models focused on office space for faculty, staff, and students, teaching and research labs, study space, and various support space. In addition, utilization studies were conducted on scheduled spaces: classrooms and laboratories.

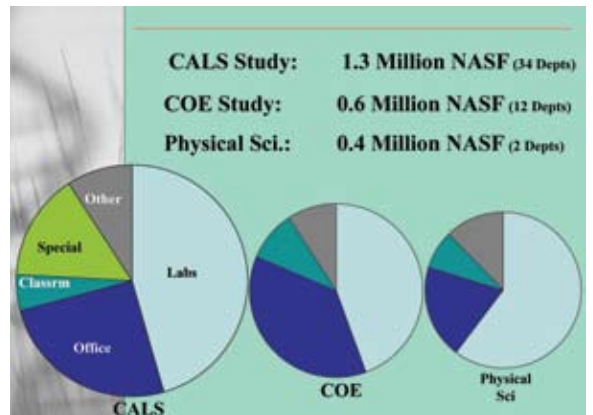
**RESULTS**

The outcome of the studies, presented to the Provost and senior administrative staff, showed the deficiencies of space in two of the three colleges and the need for more appropriate teaching and research space for all. This information became an important factor in the University's plans for the future.

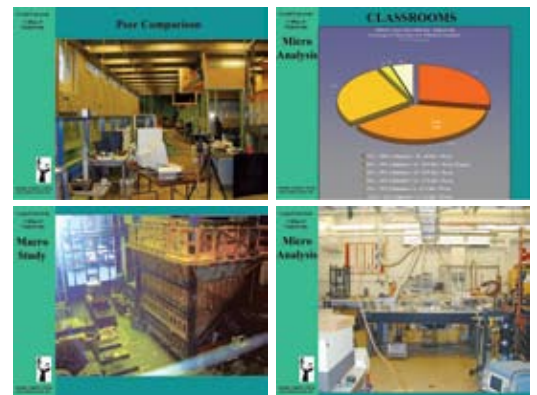
\*Project completed under previous name: Dober, Lidsky, Craig and Associates, Inc.



SPACE COMPARISON ANALYSIS, COLLEGE OF AGRICULTURE & LIFE SCIENCES



SPACE COMPARISON ANALYSIS, COLLEGE OF ARTS AND SCIENCES



COLLEGE OF ENGINEERING ANALYSIS

**REFERENCE**

Walter Cohen  
Vice Provost  
607 255 3062, 6452  
wic1@cornell.edu

Jane Van Derzee  
Facilities Inventory Manager  
607 255 7986  
jbv@cornell.edu

**PRINCIPAL IN-CHARGE**

Arthur J. Lidsky, AICP  
Study Director

George G. Mathey, AICP  
Study Coordinator



**DOBER LIDSKY MATHEY**  
CREATING CAMPUS SOLUTIONS